

# MONTHLY MEMBERSHIP PROGRESS REPORT

LOCATION KENYA AFRICA

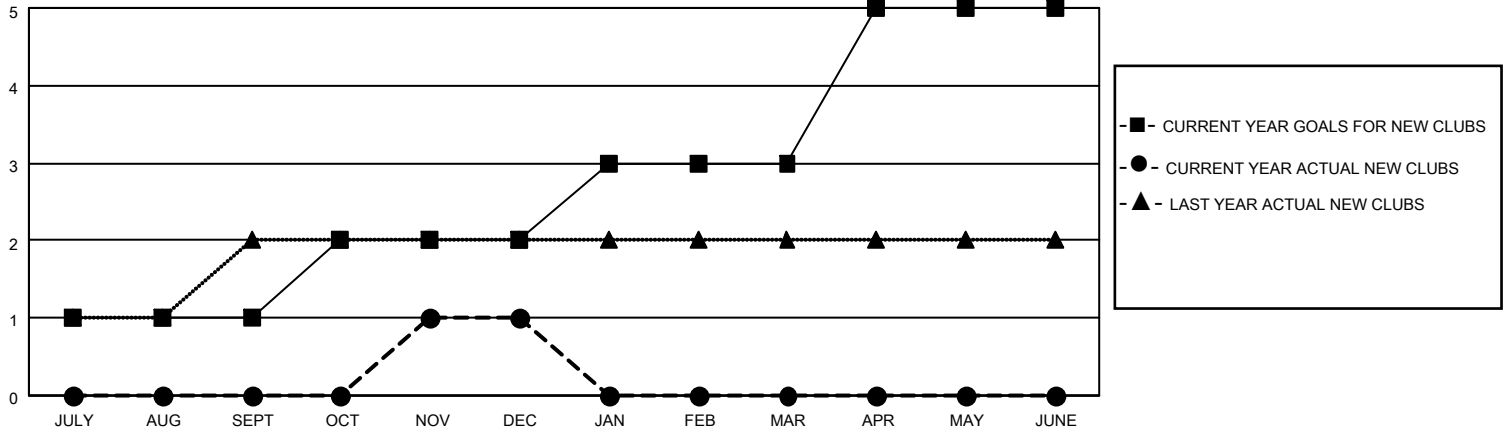
District 411 A

Results as of: 12/31/2021

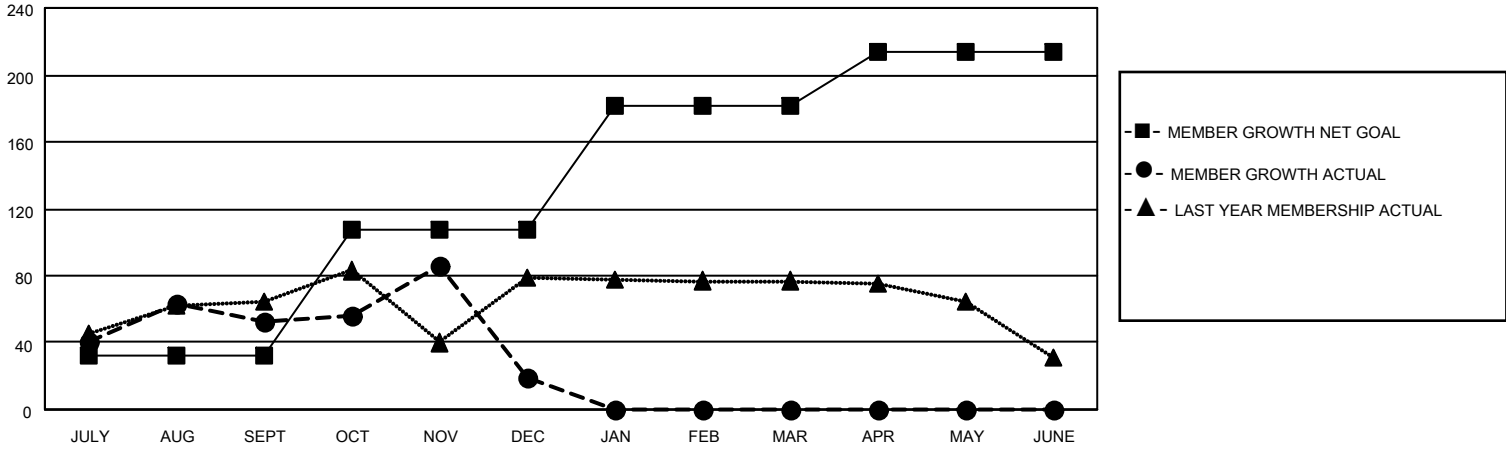
Clubs			
RESULTS FOR 2021-2022			
QUARTER	NEW CLUB GOAL	NEW CLUBS	DROPPED CLUBS
JULY/AUG/SEPT	1	0	0
OCT/NOV/DEC	1	1	2
JAN/FEB/MAR	1	0	0
APR/MAY/JUNE	2	0	0

Members			
RESULTS FOR 2021-2022			
QUARTER	MEMBER GROWTH NET GOAL	MEMBER GROWTH ACTUAL	DROPPED MEMBERS ACTUAL (including transfers)
JULY/AUG/SEPT	32	96	41
OCT/NOV/DEC	75	46	79
JAN/FEB/MAR	75	0	0
APR/MAY/JUNE	32	0	0

**GOALS AND ACTUAL NEW CLUBS CUMULATIVE**



**GOALS AND ACTUAL MEMBERS CUMULATIVE**



**DROPPED CLUBS: 2**

**28 CLUBS OF 66 ADDED 1 OR MORE NEW MEMBERS**

**GENDER DISTRIBUTION**

**DROPPED MEMBERS**

DECEASED	3
CLUB CANCELLED	44
OTHER	73
<b>TOTAL</b>	<b>120</b>

[CLICK HERE FOR CUMULATIVE MEMBERSHIP DATA](#)

MALE	968 (61.11%)
FEMALE	616 (38.89%)
NON BINARY	0 (0.00%)
PREFER NOT TO ANSWER	0 (0.00%)

TOTAL FAMILY UNIT MEMBERS 359

FAMILY MEMBERS PAYING HALF DUES 197